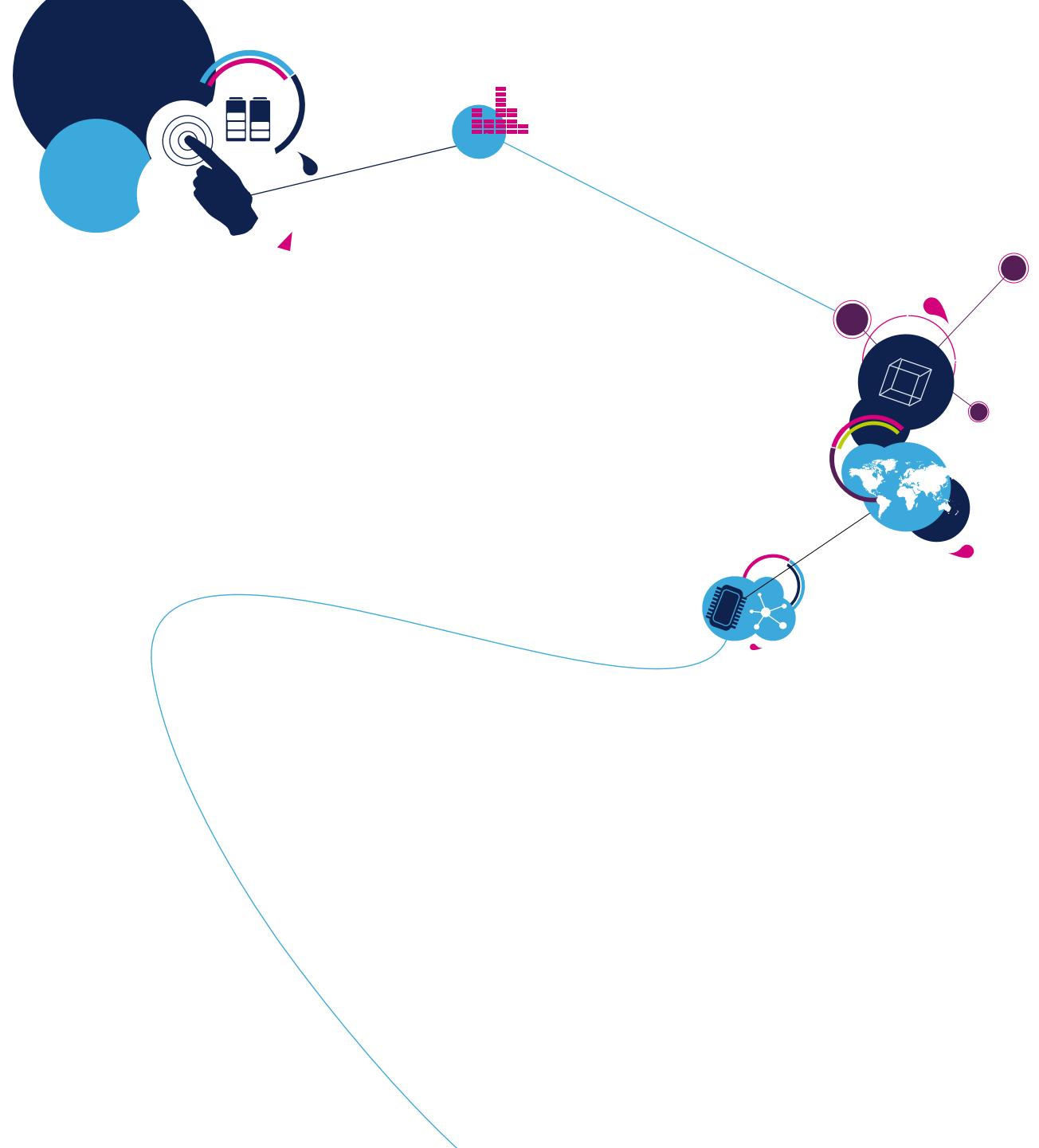


# STMicroelectronics

Consumer Electronics Show  
January 5, 2015 – Las Vegas

**Bob Krysiak**

Executive Vice President  
President, Americas Region





- 4:00 pm Introduction
- 4:05 pm Strategy, markets and business
- 4:45 pm Q&A
- 5:00-6:00 pm Demo Tour

# Forward Looking Statements

*Some of the statements contained in this release that are not historical facts are statements of future expectations and other forward-looking statements (within the meaning of Section 27A of the Securities Act of 1933 or Section 21E of the Securities Exchange Act of 1934, each as amended) that are based on management's current views and assumptions, and are conditioned upon and also involve known and unknown risks and uncertainties that could cause actual results, performance, or events to differ materially from those anticipated by such statements, due to, among other factors:*

- Uncertain macro-economic and industry trends;*
- Customer demand and acceptance for the products which we design, manufacture and sell;*
- Unanticipated events or circumstances, which may either impact our ability to execute the planned reductions in our net operating expenses and / or meet the objectives of our R&D Programs, which benefit from public funding;*
- The loading and the manufacturing performance of our production facilities;*
- The functionalities and performance of our IT systems, which support our critical operational activities including manufacturing, finance and sales;*
- Variations in the foreign exchange markets and, more particularly, the U.S. dollar exchange rate as compared to the Euro and the other major currencies we use for our operations;*
- The impact of intellectual property ("IP") claims by our competitors or other third parties, and our ability to obtain required licenses on reasonable terms and conditions;*
- Restructuring charges and associated cost savings that differ in amount or timing from our estimates;*
- Changes in our overall tax position as a result of changes in tax laws, the outcome of tax audits or changes in international tax treaties which may impact our results of operations as well as our ability to accurately estimate tax credits, benefits, deductions and provisions and to realize deferred tax assets;*
- The outcome of ongoing litigation as well as the impact of any new litigation to which we may become a defendant;*
- Natural events such as severe weather, earthquakes, tsunamis, volcano eruptions or other acts of nature, health risks and epidemics in locations where we, our customers or our suppliers operate;*
- Changes in economic, social, political, or infrastructure conditions in the locations where we, our customers, or our suppliers operate, including as a result of macro-economic or regional events, military conflict, social unrest, or terrorist activities;*
- Availability and costs of raw materials, utilities, third-party manufacturing services, or other supplies required by our operations.*

*Such forward-looking statements are subject to various risks and uncertainties, which may cause actual results and performance of our business to differ materially and adversely from the forward-looking statements. Certain forward-looking statements can be identified by the use of forward looking terminology, such as "believes," "expects," "may," "are expected to," "should," "would be," "seeks" or "anticipates" or similar expressions or the negative thereof or other variations thereof or comparable terminology, or by discussions of strategy, plans or intentions.*

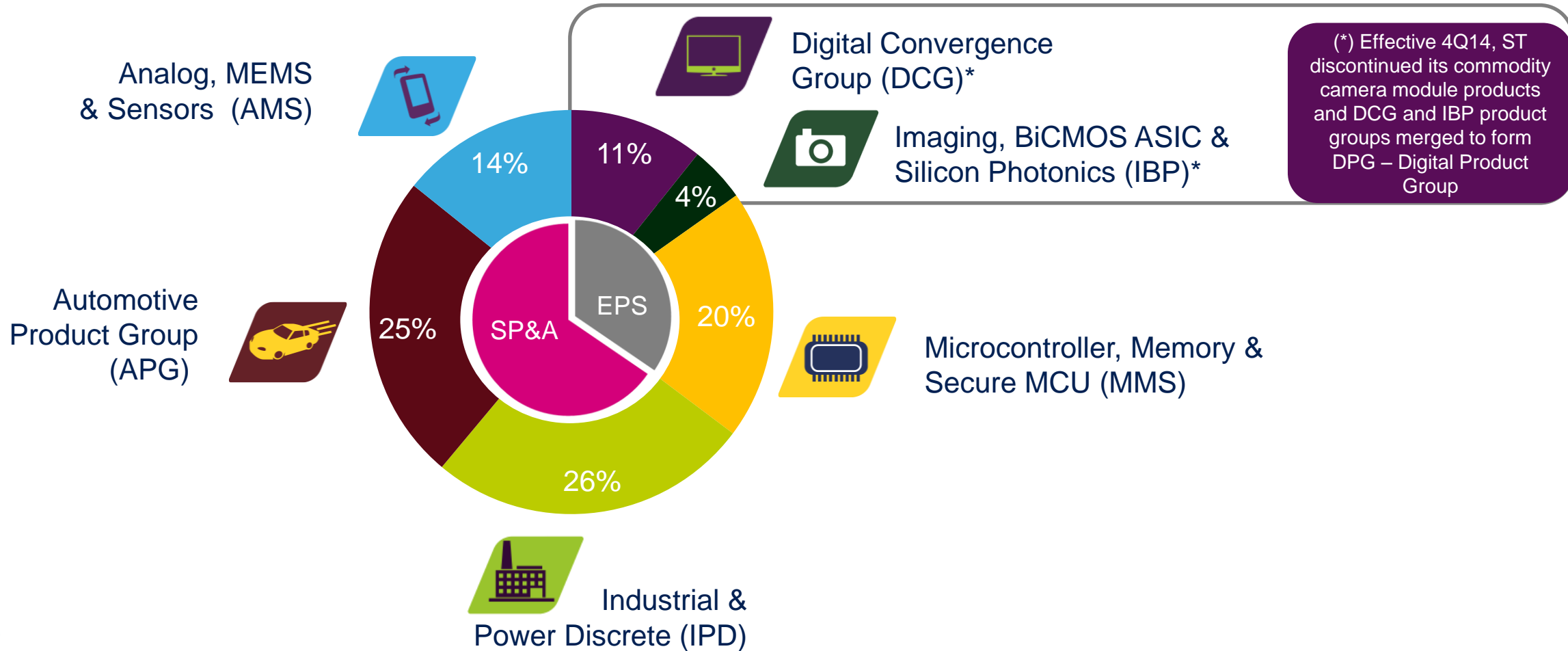
*Some of these risk factors are set forth and are discussed in more detail in "Item 3. Key Information — Risk Factors" included in our Annual Report on Form 20-F for the year ended December 31, 2013, as filed with the SEC on March 5, 2014. Should one or more of these risks or uncertainties materialize, or should underlying assumptions prove incorrect, actual results may vary materially from those described in this release as anticipated, believed, or expected. We do not intend, and do not assume any obligation, to update any industry information or forward-looking statements set forth in this release to reflect subsequent events or circumstances*

# ST's vision and strategy

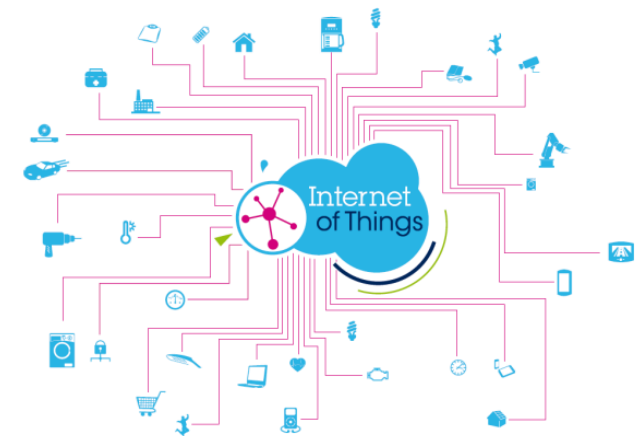


# Well Balanced Product Portfolio

## Revenues by Product Group 3Q14



# Focus Areas



# Focus Areas



# ST Leader in Set-Top Box

8

## Long-standing market leadership in Set-Top Box

- **Market leadership** in Set-Top Box through focused portfolio
- Complete portfolio for the **US cable market**
- Leading the transition to the **HEVC** and **Ultra HD** Client/Server and Home Gateway
- Established **worldwide ecosystem** of partners and 3<sup>rd</sup> parties
  - Middleware vendors and integrators
  - Content management and security solutions
  - Services and application provider
- **World-class IP portfolio**, enabling Ultra HD multi-screen video processing & seamless home connectivity

#2	Worldwide
>1 B	MPEG Decoders cumulative shipments





## Addressing a \$3.0B SAM in 2015

### Americas & EMEA

- High value market
- ST SAM: \$2.1B

### Asia Pacific

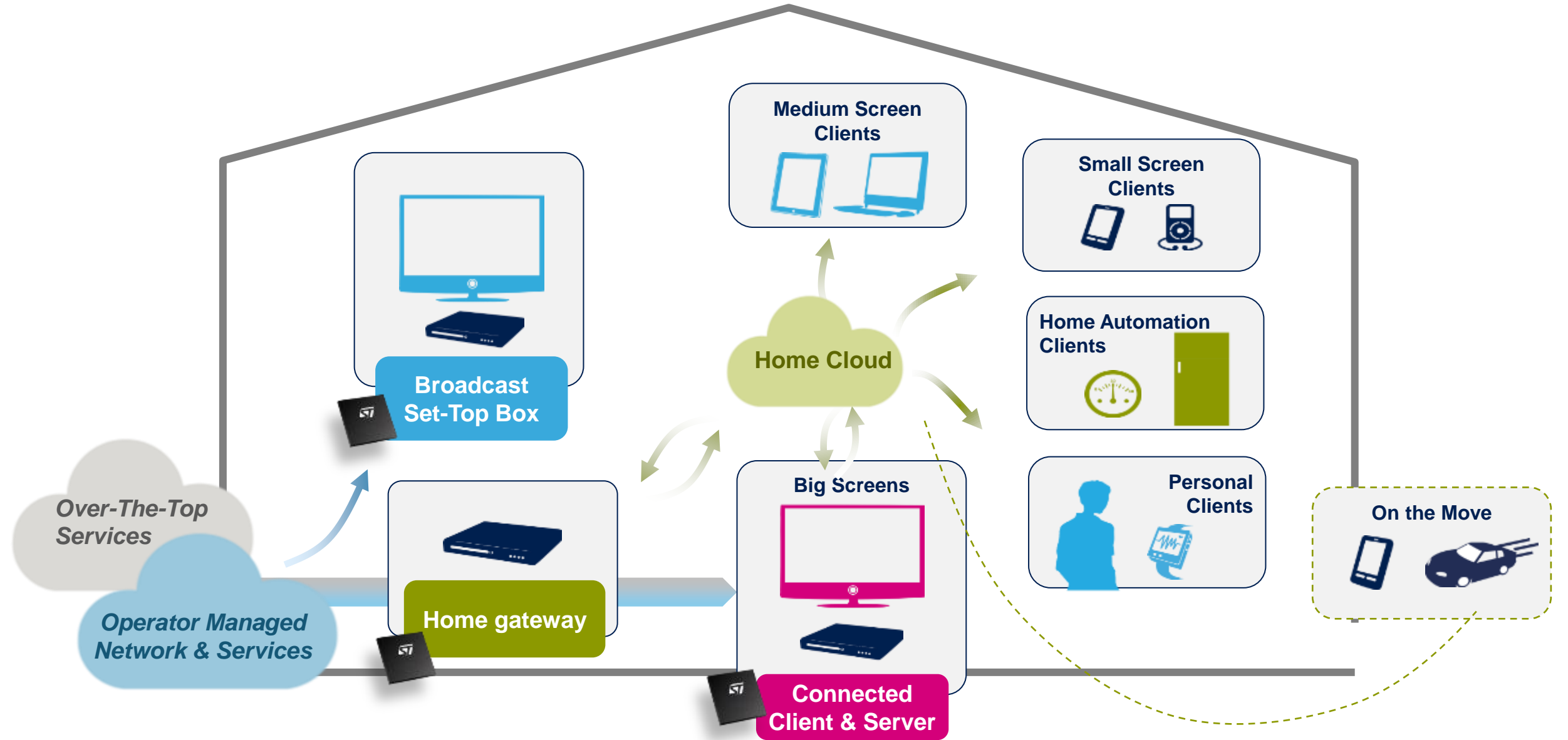
- High volume market
- ST SAM: \$900M

## ST Solid Number 2

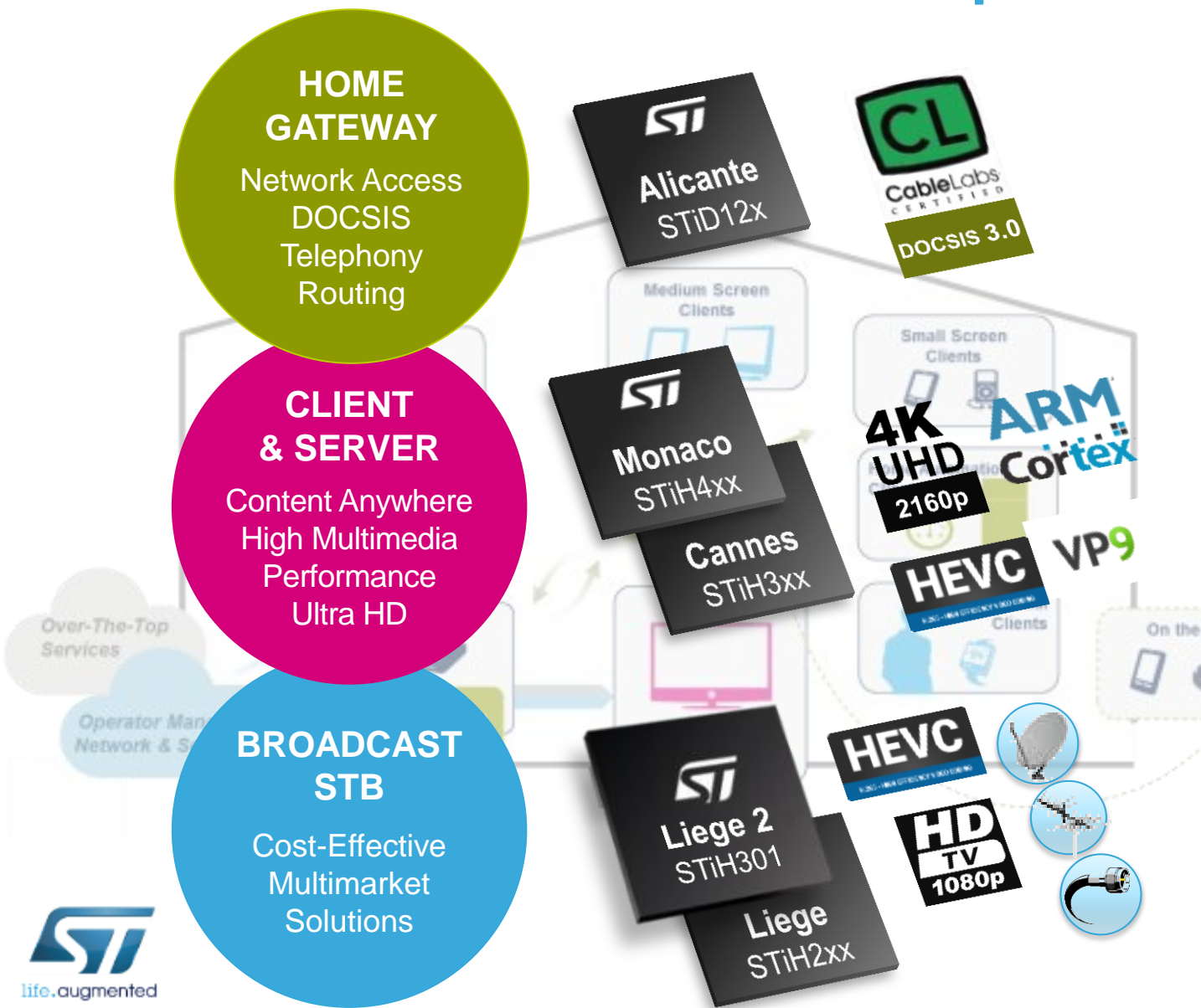


Share by revenues 2013, IHS

# Towards the Home Cloud



# Complete Product Portfolio



Complete and cost optimized HW/SW Portfolio

Ad-Hoc devices for specific use cases

HW/SW compatibility within each product family

From entry broadcast to high-end HEVC on ARM

A collection of partner logos including Cisco Technology, Nagra Kudelski, Softat Home, WYplay, ARM, Linaro, RDK Reference Design Kit, and Android.

# Aggressive Deployment

**BROADCAST STB**

**ST**

Liege2  
STIH301  
Liege  
STIH2xx

**CLIENT & SERVER**

**ST**

Monaco  
STIH4xx  
Cannes  
STIH3xx

**HOME GATEWAY**

**ST**

Alicante  
STID12x



Over 170 identified design opportunities

About 70 new boxes expected to hit production in the course of 2015

- Wide portfolio
- HW/SW compatible
- Single to quad ARM core
- FHD & UHD HEVC
- 3D Graphics
- Full security
- SW Ecosystem

A grid of logos representing the STB ecosystem partners, including:

- CISCO, ARRIS, Skyworth, infomir, SMART TV, ADB Connected Business Connected Users, inspur, 九州
- technicolor, SagemCOM, KAON, Pace, YINHIE, StarTimes, CHANGHONG, TCL
- ECHOSTAR, HUMAX, HUAWEI, ZTE中兴, MYBOX, COSHIP, MitraStar, FORTIS, 新大陆 Newland
- GENERAL SATELLITE, Prime, HANDAN, albis technologies, Hisense, DELTACOM ELECTRONICS, ALTECH, VIDEOCON, LOGIC EASTERN

# Leading in Ultra HD & HEVC Video Technologies

## CLIENT & SERVER

Content Anywhere  
High Multimedia  
Performance  
H.265, Ultra HD  
Graphics

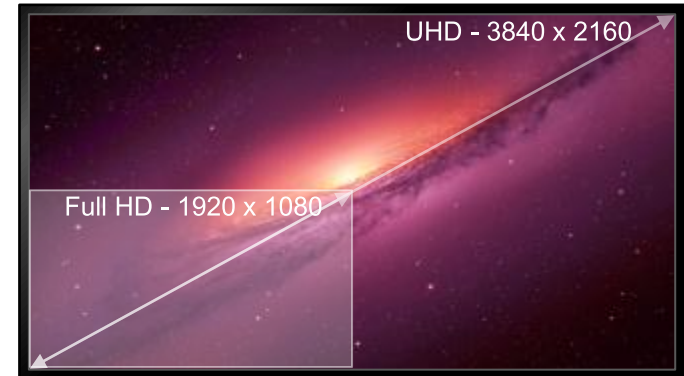
## HOME GATEWAY

Network Access  
DOCSIS  
Telephony  
Routing

Driving Operator & OEM CAPEX optimization

Enabling large-scale Ultra HD deployments



Bringing an exciting new experience to the consumer



# Complete Solution for US Cable Set-Top Box



### Next generation high speed broadband

- High bandwidth, high bit rate, high OFDM QAM constellation order (4K)
- ARM® v8 Cortex™ 64-bit cores and FD-SOI technology for next generation power-to-performance ratio
- DOCSIS 3.1 demonstrator available




### Cable Data Gateway

- A standardized software framework for Broadband gateway products
- Outbound/Inbound phone call
- Complete SW stack from eRouter to Packet Cable





### Interactive Cable Gateway

- DOCSIS 3.0 complete Pay-TV multimedia gateway
- STiD12x has DOCSIS 3.0 Certification by CableLabs®
- Securely distribute premium content to retail connected devices



### Home-entertainment Networking

- High-quality content distribution to multiple IP boxes
- In line with growing bandwidth of network access
- Improved quality of service (QoS)




### Client & Server RDK Available NOW

- Leveraging open SW technology
- Partnering with key UI providers for US cable operators
- Proactive and continuous integration of RDK-LLC



### Advanced Use Case on Deployed Client

- Wi-Fi for best video quality experience
- Cloud gaming on deployed ARM-based solutions
- Transcoding for client devices



# Product Portfolio Expansion

## Entry broadcast to high end/UHD HEVC on ARM

### Ultra High Definition

- HEVC decode in 4kp60
- HDMI2.0 support
- VP9 in UHD decode




### Ultra High Definition services

- Forensic watermarking
- Protection of content
- High Dynamic range for improved video quality






### Android TV

- Latest Android TV 5.0 Lollipop
- Linear-TV services integration
- Integration of Trusted Execution Environment (TEE) & Secure Data Path (SDP)



### Entry level HEVC boxes & services

- HD HEVC based boxes
- KreaTV from Arris
- OTV5 Gravity Edge HTML-5 user interface
- HTML-5 based boxes



### Servicing all markets

- Multiple flexible broadcast flavors tailored to market needs
- STiH301: Flexible Broadcast Frontends
- Accelerate Time-to-Market



### Video Grade Wi-Fi

- Strategic partnership with Quantenna
- Video grade quality over 5 GHz Wi-Fi 802.11ac
- High QoS/QoE Wi-Fi platform
- Seamless integration in Set-Top Box







# The Car as a Technology Hub

**Car evolution is dominated by three domains with a high level of interaction**



# ST in your Car

Volkswagen  
Golf



Peugeot  
RCZ



Mercedes  
CLS



BMW  
3 Series



Ford F150



Toyota  
Corolla



Hyundai  
Sonata



Fiat 500



Chevrolet  
Corvette



Porche  
918 Spyder



Ferrari  
La Ferrari



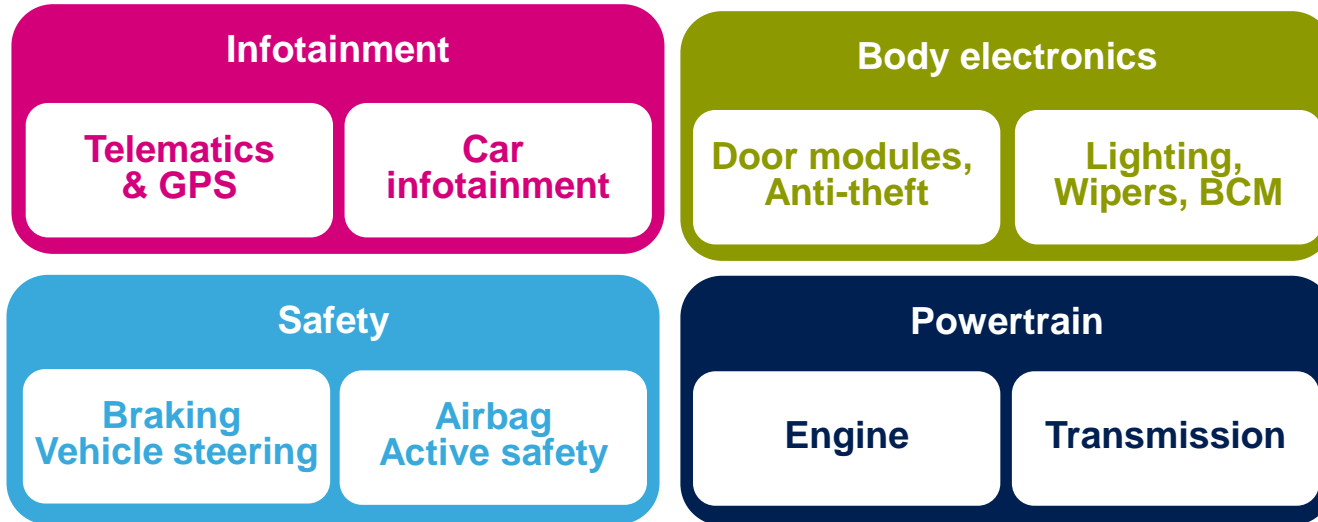
Audi A6



Changan

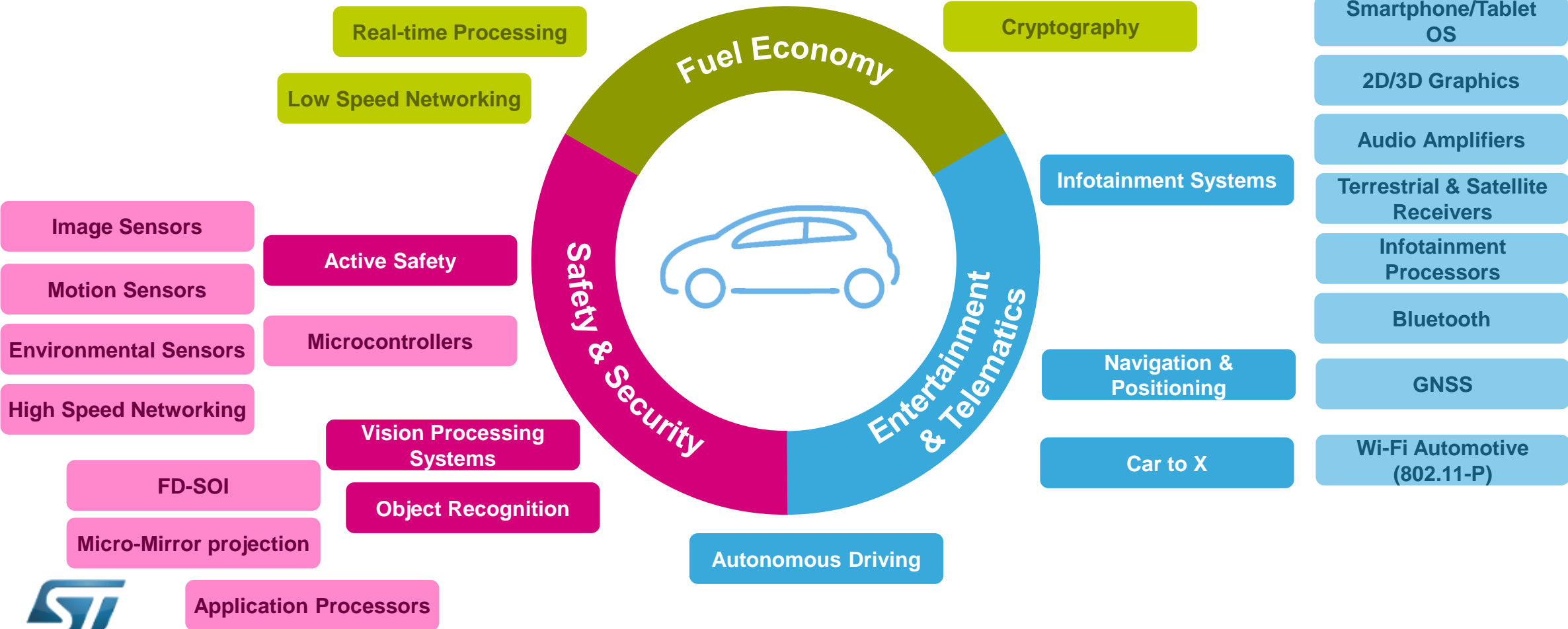


Nissan juke



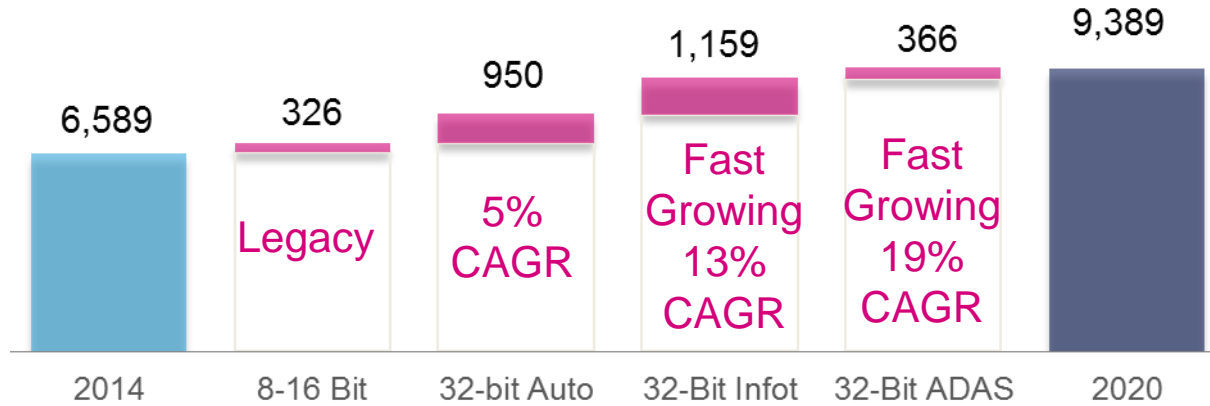
# Consumer Technologies growing fast in Cars

Consumer technologies need to be adapted to automotive requirements



# Content Evolution Driven by Automotive Digital Products

Digital Semiconductor Business Opportunity M\$

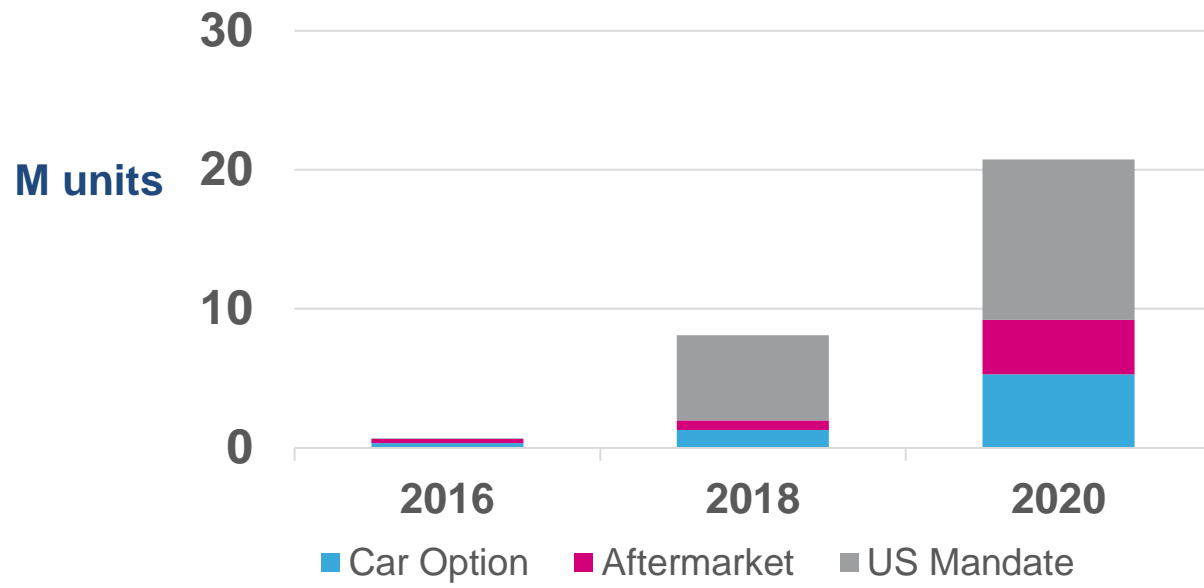


- Positioning Receivers CPU
- Digital Satellite Receivers CPU
- Chassis & Safety MCU
- Low-end Infotainment 32-bit CPU
- Digital Terrestrial Tuners
- Body, General Purpose Auto MCU
- ADAS MPU
- Processors with Connectivity
- Powertrain MCU



# The Connected Car Opportunity

## Vehicle-to-X market



 **GNSS**  
 Teseo Positioning

 **Gyroscope & Accelerometer**

**V2X System-on-Chip**  
 with embedded Hardware Security Module



**V2X Partnership**



Endorsed by  **Audi**

# Mobileye EyeQ™

Pedestrian Collision Warning



Lane Departure



Forward Collision Warning



Headway Monitoring



Mobileye Intelligent High-Beam



Speed Limit Indication



**Vision Partnership**

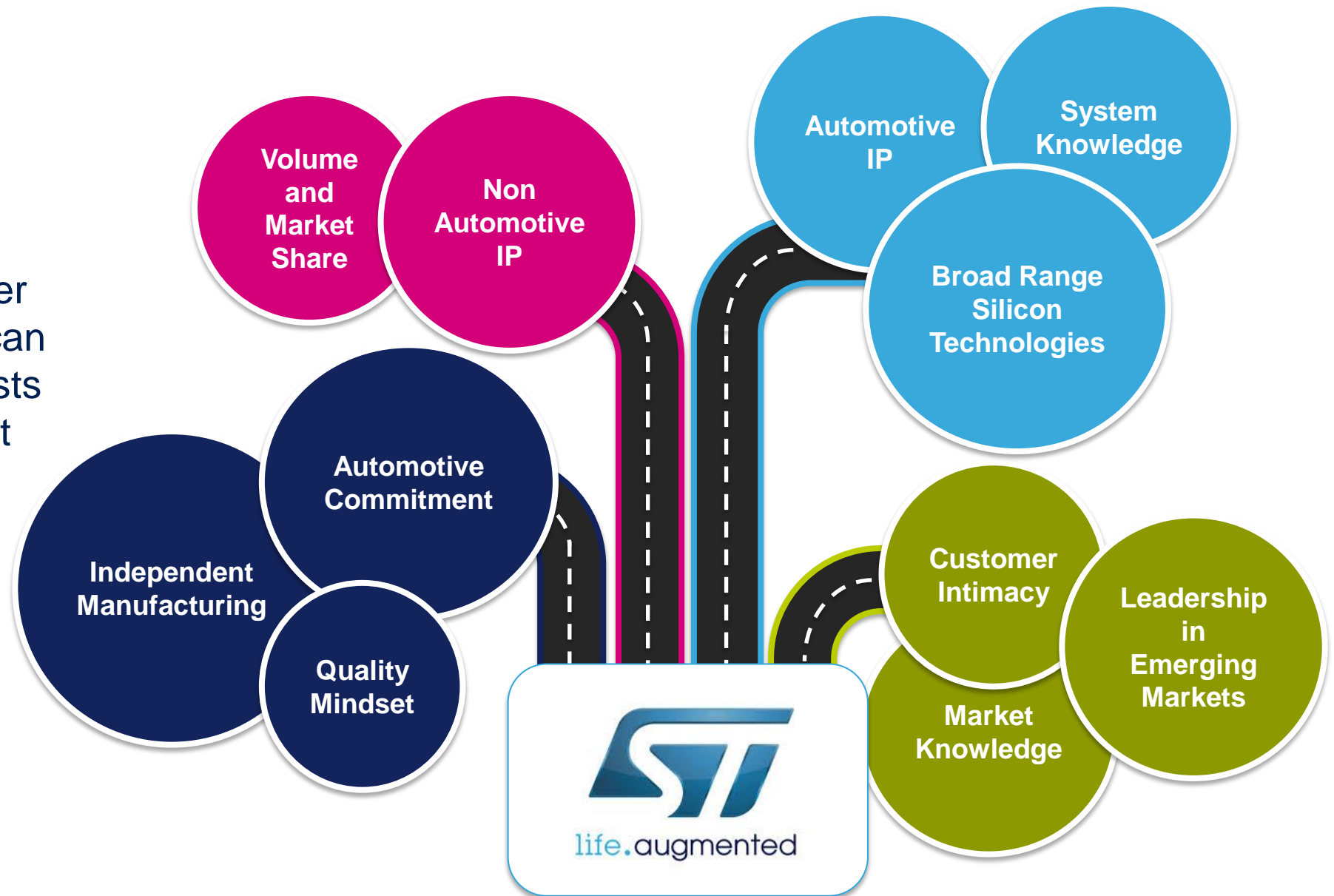


# Tesla Model S Electric Car

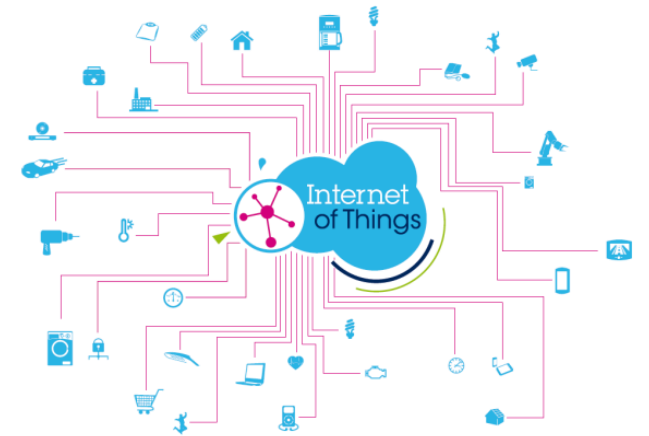


# ST Leading the Automotive Transition

Only an innovative technology and IP provider committed to Automotive can match the stringent requests of the Automotive market

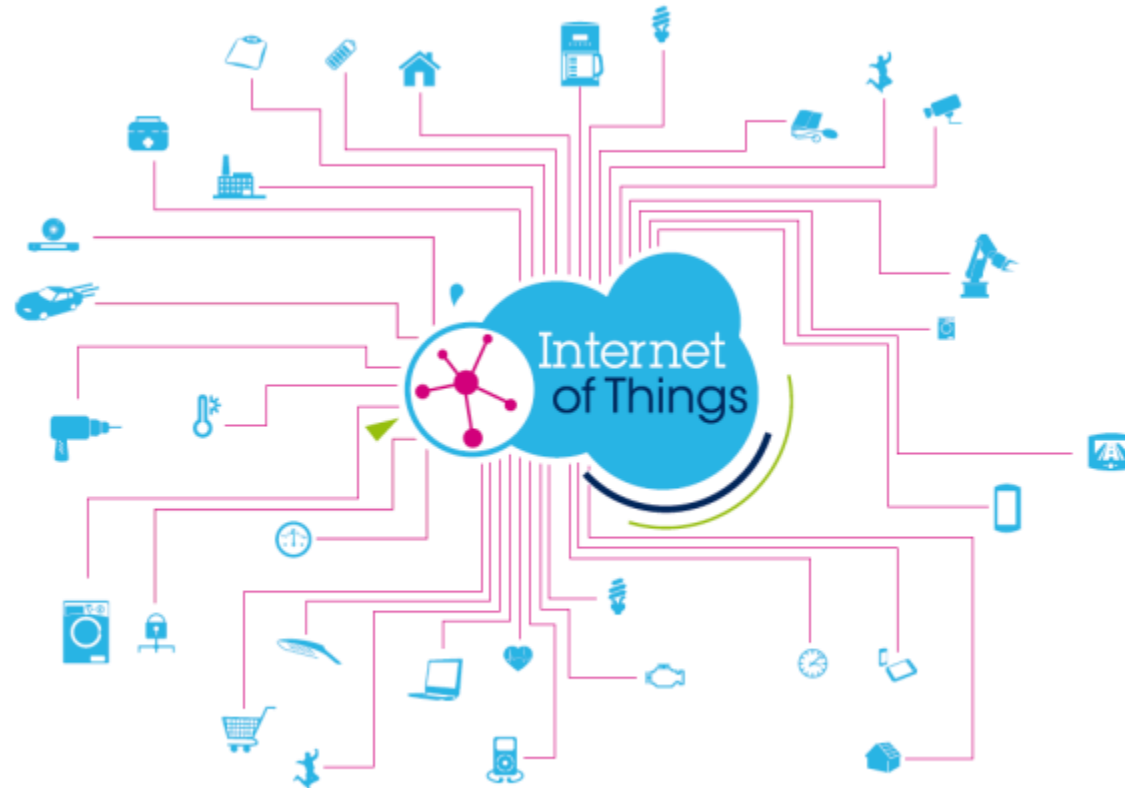






# The Internet of Things

Existing Things augmented



New Things to augment life

“Things that leverage the internet to make them smarter...”

# Existing Things Augmented

## Making Things smarter



It used to tell you the time



Now it tells you what to do



And how you are doing



It used to remind you of someone close to your heart



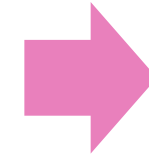
Now it reminds you to take care of your heart



And exactly what you doing



They used to keep your feet warm



Now they help you keep you and your feet fit










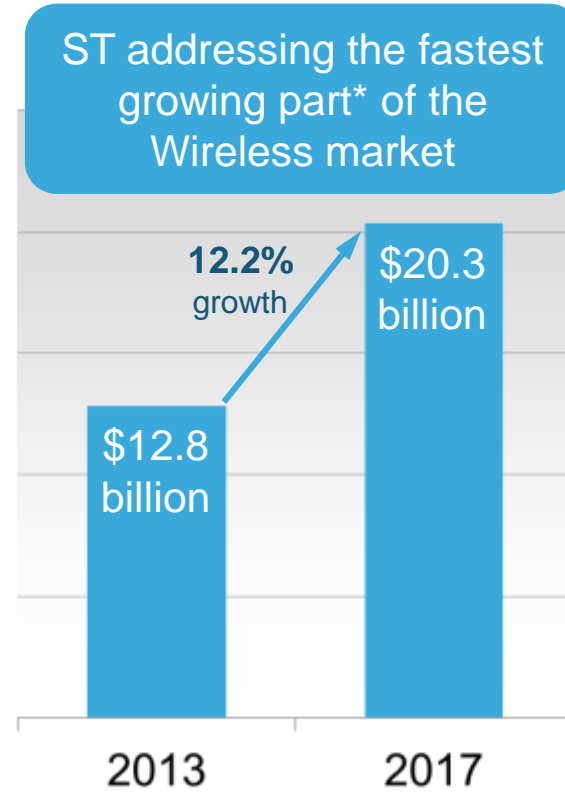
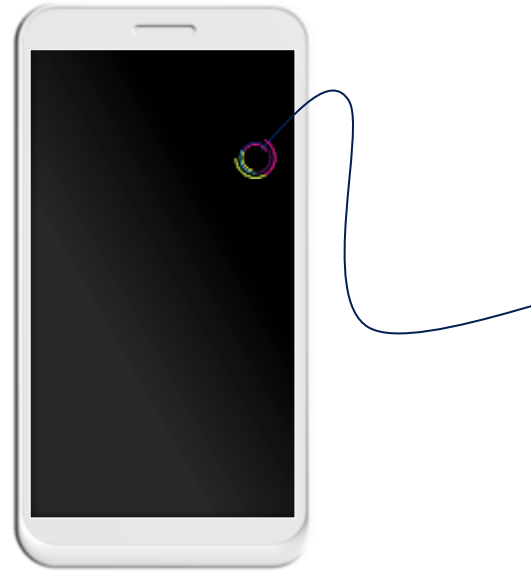
They used to help you see clearly



Now they help you to see more

# ST in Mobile Today

-  Motion Sensors
-  Ultra-mobile Projector
-  FingerTip Touch Sensor
-  MEMS Microphones
-  Environmental Sensors
-  Proximity & Ambient Light Sensors
-  Imaging solutions



-  Low-power Microcontrollers
-  Secure Microcontrollers
-  Dynamic NFC tags
-  EEPROM

-  AMOLED Power Supply
-  Backlight Driver
-  Energy Management
-  Wireless Charging
-  Audio Processors Audio Amplifiers
-  Antenna Tuning
-  Ultra-low Power Connectivity
-  Protection & EMI-Filtering Devices

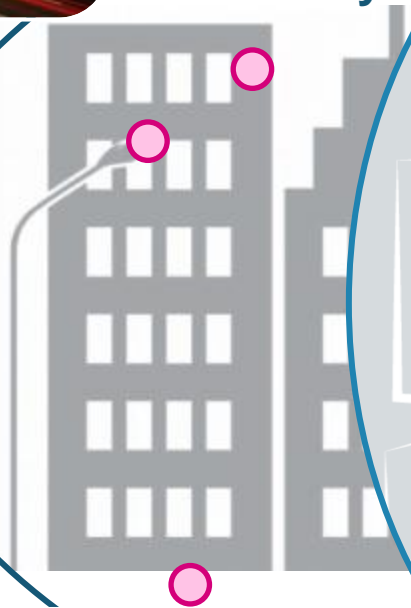
\*Sensors, imaging, MCU, standard logic, display drivers, discretes  
Source : IHS

# Expanding to Make Things Smarter

## Beyond the Smartphone



Smart City



Smart Home



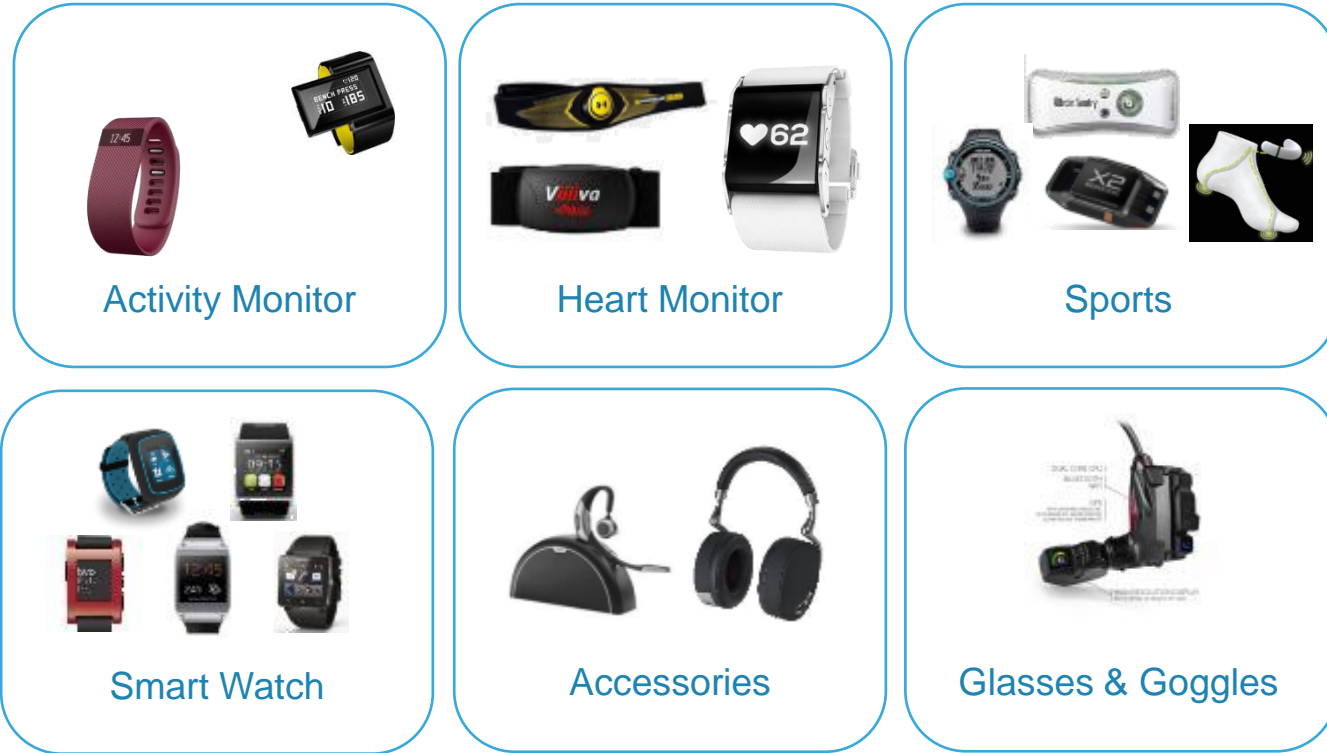
Wearable



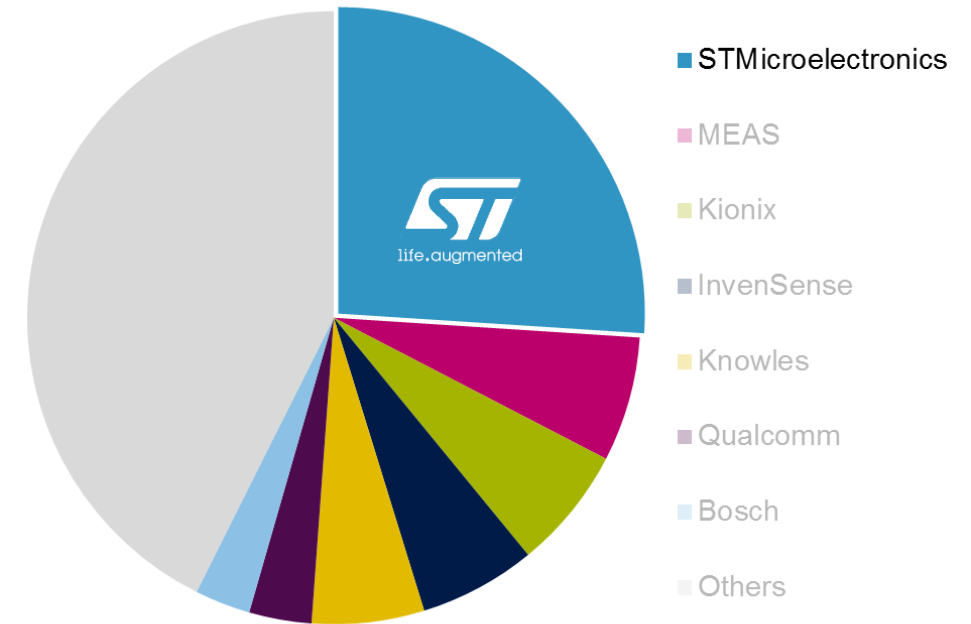
Smart Car



# ST Winning in Wearables



### MEMS & Sensors Revenue Share for Wearables – 2013\*








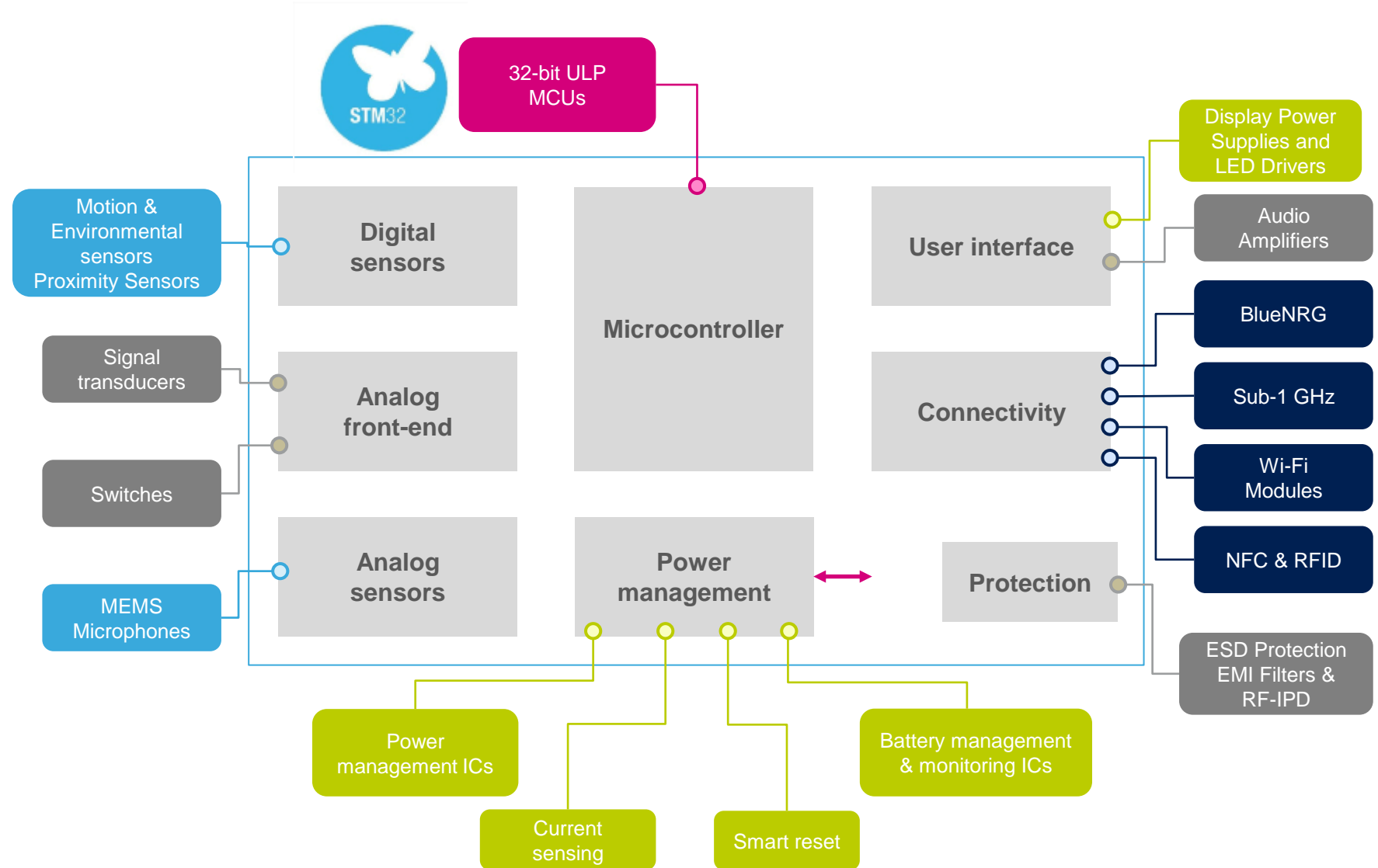
\* IHS MEMS & Sensors for Wearables - 2014

IDC forecasts the Wearables Market will grow to be a **\$48B** market by 2019



# ST Offering for Wearables

-  Sensors
-  ULP Microcontrollers & Memories
-  Ultra-low power connectivity
-  Analog and mixed signal components
-  Power and energy management



# ST Winning in the Smart Home

- Sensors, intelligence and connectivity being added to many home devices
- Innovative nature of the products allows new companies to challenge established leaders
- ST present with many of the leaders in the first wave of augmented things in the home






- Sensors
- Microcontrollers & Memories
- Ultra-low power connectivity
- Analog and mixed signal components
- Power and energy management

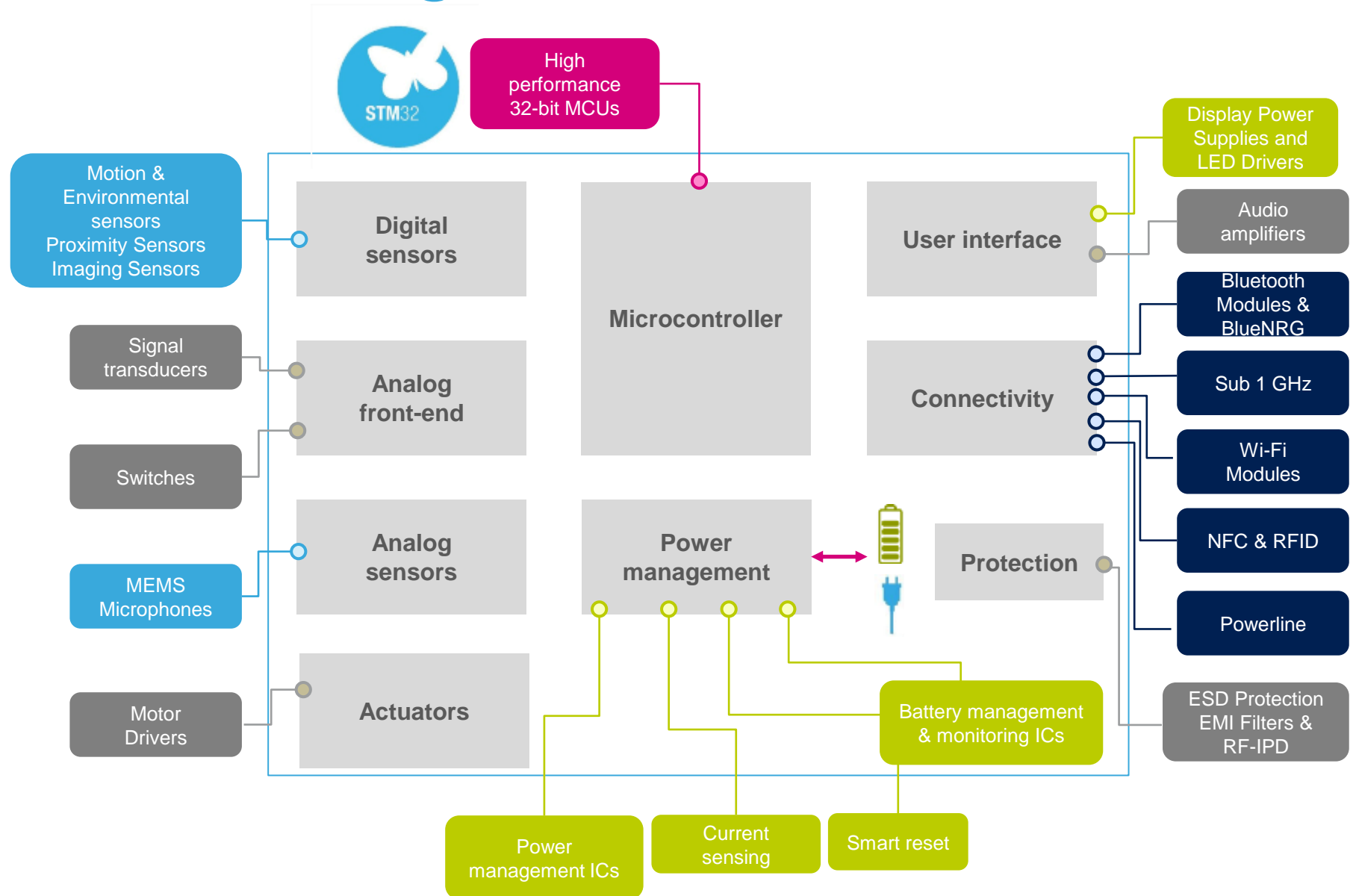




# ST Offering for the Smart Home



-  Sensors
-  Microcontrollers & Memories
-  Ultra-low power connectivity
-  Analog and mixed signal components
-  Power and energy management



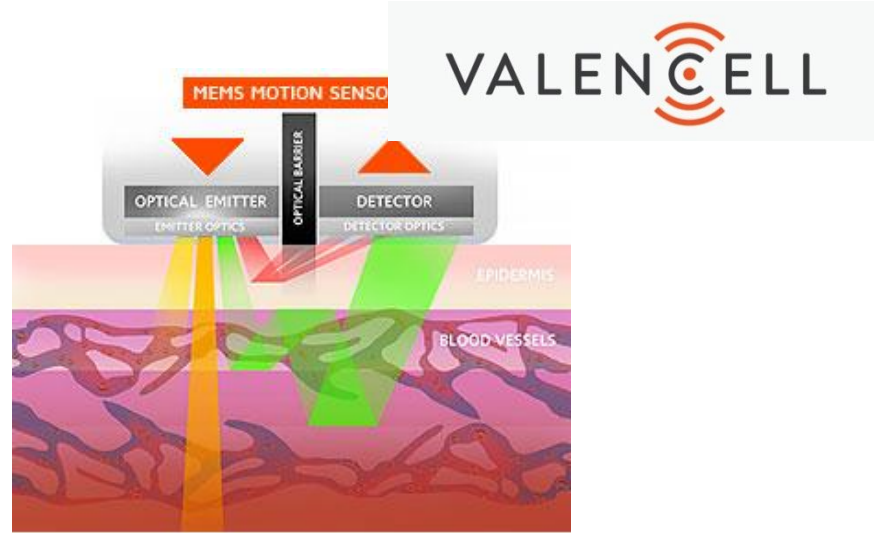
# Powering the Next Wave

## ATLAS




ADVANCED EXERCISE DETECTION

The ATLAS smartwatch features a black strap and a rectangular display showing fitness metrics: 'BENCH PRESS' with a weight of '10' and a time of '1:15', and a heart rate of '120'.



## PULSE ON

WE MAKE HEART RATE MONITORING EASIER THAN EVER FOR YOU TO REACH YOUR FULL POTENTIAL



Training Effect  
**4.2**  
Highly Improving

Time to full recovery  
22:55 (81%)

Your fitness level is better than 85% of people of your age!

The Pulse On smartwatch has a white strap and a black display showing a heart rate of '62'. Next to it is a smartphone displaying a fitness app interface with a 'Training Effect' of 4.2 and a 'Time to full recovery' of 22:55.

## sensoria

Powerful Electronics

Proprietary smart-fabric sensors embedded in the sock, detecting pressure and force.



- Accelerometer
- Magnetic Snaps
- Splashproof
- White or Black
- Bluetooth Smart

The Sensoria advertisement features a white smart sock with a sensor on the heel. Below the sock are icons for an accelerometer, magnetic snaps, splashproof capability, and Bluetooth Smart connectivity. The text highlights that the sock has proprietary smart-fabric sensors for detecting pressure and force.

## SKYBELL™



Front Door

Photo Hold to Talk End Call

The Skybell advertisement shows a white, dome-shaped smart doorbell with a camera lens and a microphone. Next to it is a smartphone displaying the Skybell app interface, which includes a 'Photo' button, a 'Hold to Talk' button, and an 'End Call' button. The app also shows a video feed of a woman at the front door.

# Making IoT Building Blocks More Accessible

## Sensors & Actuators



Motion  
MEMS



Environmental  
Sensors



MEMS  
Microphones



Touch Sensors



Micro-actuators



Proximity  
Sensors



Image Sensors

## Brain



Low-power

Secure



Sensor fusion

## Communication



Ultra-low power  
connectivity

## Interfaces



Analog

## Power

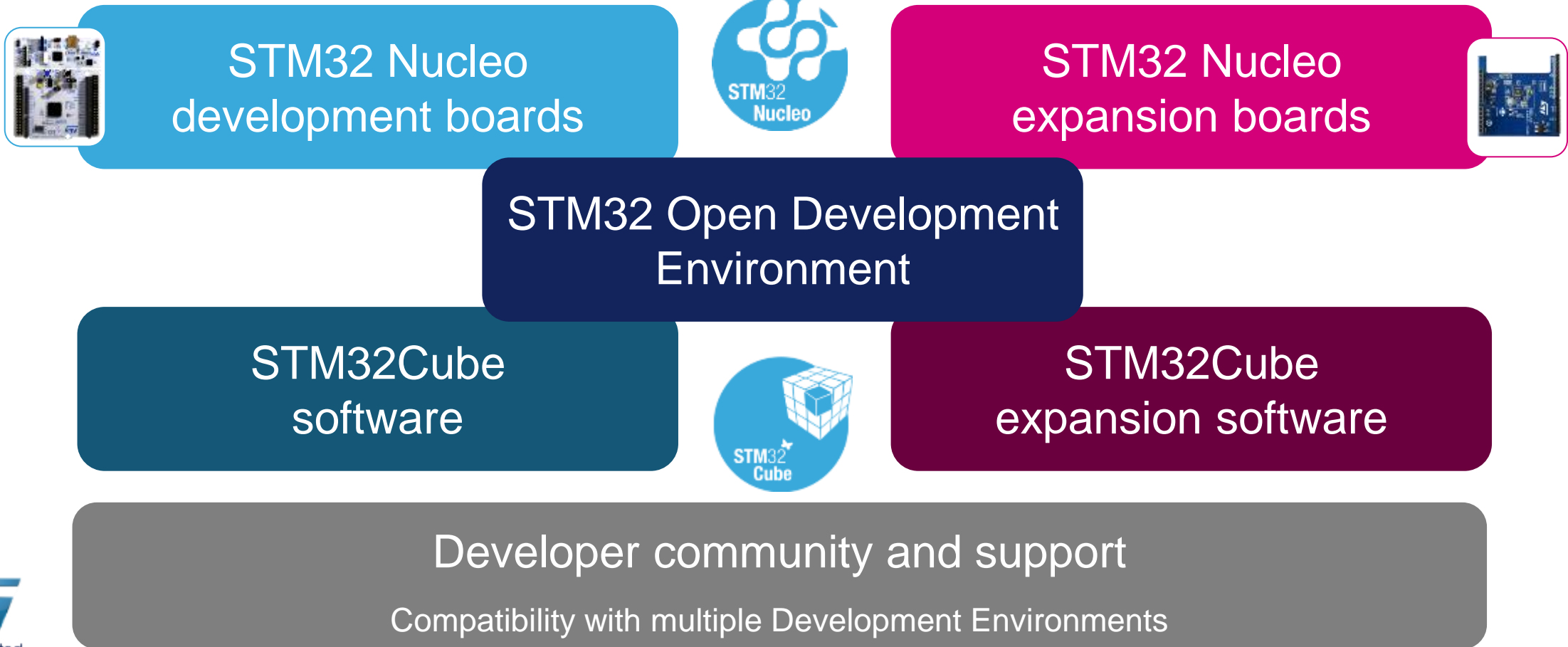


Power and energy  
management



# STM32 Open Development Environment

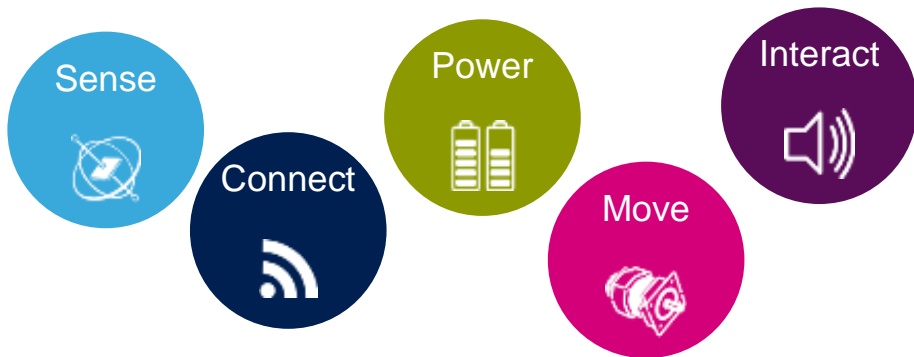
The STM32 Open Development Environment is an open, flexible, easy and affordable way to develop innovative applications



# STM32 Open Development Environment



Boards for all STM32 Families



Boards for key functionality

## Software to put it all together



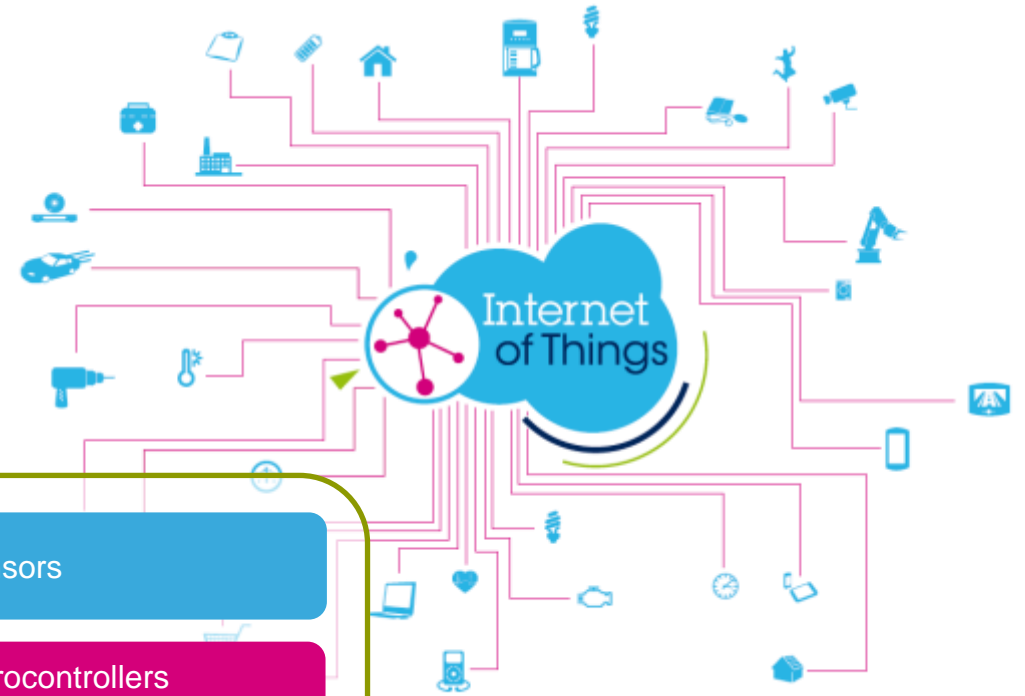
- **STM32Cube** - A set of free of charge tools and embedded software bricks to enable fast and easy development
- **STM32Cube Expansion Software** for every expansion board
- Multiple Development Environments
- Develop community and support

**Open.MEMS** initiative giving easy access to drivers, middleware, and application software to develop with ST sensors using the STM32 open ecosystem

# ST has All the Ingredients for the IoT

## ST Enabling Augmented Things in the IoT

- A unique portfolio with all the key technologies & products
- Understanding the sensor-to-cloud value chain
- Engaging with a broad ecosystem
- Expertise in digital-security technologies
- State-of-the-art semiconductor technologies and high-volume production capabilities



Sensors

Microcontrollers & Memories

Ultra-low power connectivity

Analog and mixed signal components

Power and energy management

## ST is leading the evolution of the Digital Home

- Optimized solutions for broadcast Set-Top-Box & Complete portfolio for the US cable market
- Strong customer traction on recently launched product families
- Best-in-class Ultra HD and HEVC solutions available today

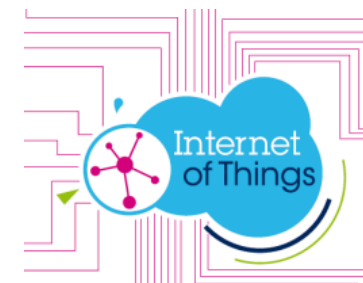


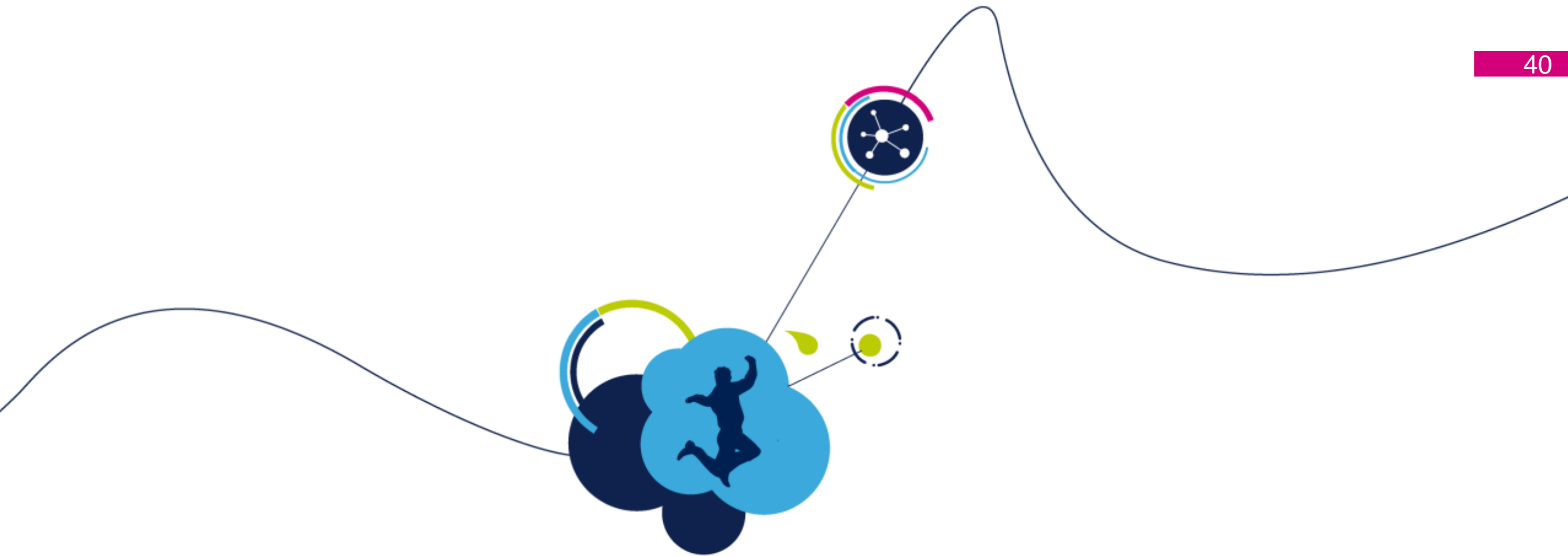
## ST is well positioned to continue to lead the Automotive market

- Long-standing commitment to Automotive and established leading positions
- Early investment in key technologies and IP to deliver innovation
- Bringing consumer technologies to the car

## ST is already a leader in the Internet of Things

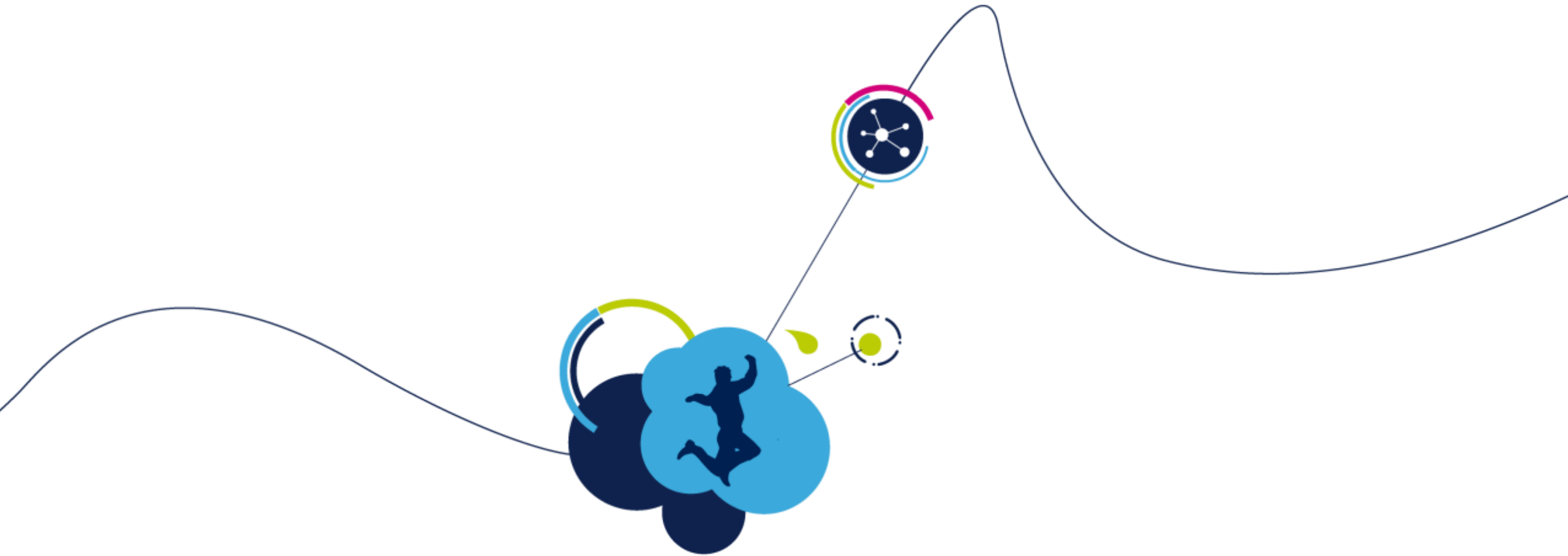
- Complete product portfolio including sensors, microcontrollers, connectivity, & smart energy
- Expertise in digital-security technologies & understanding of the sensor-to-cloud value chain
- Strongly engaged with leading players and making IoT technologies even easier to access





# Q&A





> 40 Demos in Encore Tower Suites  
5<sup>th</sup> & 6<sup>th</sup> floors